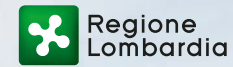




Con il patronato di:



2nd - 3rd

December 2023

TEAM INVITATION

**FIS CROSS COUNTRY
COPPA ITALIA
Trofeo Dante Canclini**



2nd - 3rd December 2023

FIS CROSS COUNTRY

COPPA ITALIA
Trofeo Dante Canolini



CONTENT

- Welcome
- Organizing Committee
- Rules and information
- Venue and accommodation
- Programme
- Race course
- Transportation
- Medical services
- Contacts



Con il patronato di:



2nd - 3rd December 2023

FIS CROSS COUNTRY

COPPA ITALIA
Trofeo Dante Canolini



WELCOME

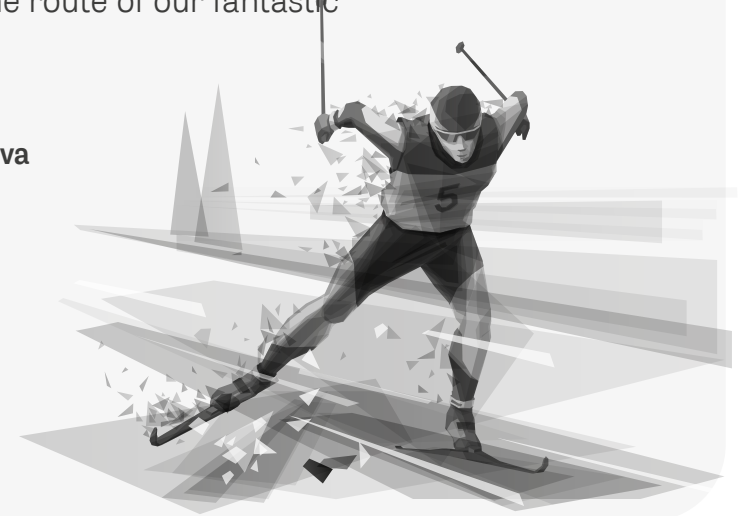


Hosting the Fis Cross-Country skiing competitions in Valfurva represents yet another opportunity to give prestige to the tourist resort of S. Caterina which it has done and continues to do over the years the organization of sporting events is one of its strengths.

A cordial welcome to our land to all athletes and companions and a special wish for good job to the organizing committee and to all the volunteers who will participate in an event that it will certainly be able to give strong emotions to the athletes and to all those who will be present to support them along the route of our fantastic track surrounded by the natural beauty of the Stelvio National Park.

Major of Valfurva

Luca Bellotti



Con il patronato di:



2nd - 3rd December 2023

FIS CROSS COUNTRY

COPPA ITALIA
Trofeo Dante Canolini



Organizing Committee

Promoter

F.I.S.

Fis Internationale Ski Federations



Organizer

F.I.S.I.

Federazione Italiana Sport Invernali



ORGANIZING COMMITTEE

Sci Club Alta Valtellina



Via Alessandro Manzoni, 22 - 23032 Bormio SO
sciclubaltavaltellina@gmail.com
+39 0342 901482

JURY

FIS TECHNICAL DELEGATE

Gola Mattia (ITA)

ASSISTANT OF THE T.D

Mapelli Marco (ITA)

CHIEF OF COMPETITION

Compagnoni Federico (ITA)



Con il patronato di:



2nd - 3rd December 2023

FIS CROSS COUNTRY

COPPA ITALIA
Trofeo Dante Canolini



Rules and information

Dates

02 December – 03 December 2023

Competition Venue

Pista Valtellina Centro la Fonte- Santa Caterina Valfurva

Race Office

Sala Polifunzionale p.zza Magliavaca - Santa Caterina Valfurva | Opening hours:
Thursday 30th Nov, 02:00pm – 6:00pm and Friday, Saturday and Sunday 09:00 am – 06:00pm

Competitions

managed according to FIS 2023/2024 regulations.

General rules

International ski competition rules ICR -OPA COC 2023/24. All athletes must have an active FIS-CODE.

Entry rules and fee

For all the athletes entry fee is €12.00 each pers. for race.
Registration must be made through the National Ski Association for all athletes.

Wax cabins

Preparation of the skis will take place in a structure near the crosscountry stadium and will be organized for all teams.

Awards

will be given to the six best athletes classified in each category on Saturday and five best athletes classified in each category on Sunday



Con il patronato di:



2nd - 3rd December 2023

FIS CROSS COUNTRY

COPPA ITALIA
Trofeo Dante Canolini



Venue and accommodation

Location

Santa Caterina Valfurva features several stunning itineraries which are just perfect for cross-country skiing enthusiasts. Valtellina track is structured along a wide plain and thick woods at an altitude of 1800 m. It is characterized by 5 and 10 km rings and ups and downs between 190 m and 390 m of altitude. The track shows original technical solutions and a demanding slope: they are much appreciated by the most experienced cross-country skiers.

Of course Santa Caterina is excellence for everyone: next to the competitive track there is an easier track with 2, 3 and 5 km rings. It's just perfect and accessible for beginners too.

“La Fonte centre” is located at the start of the Valtellina track. It's run by the ski instructors of the cross-country ski school and it is a true meeting point for all cross-country skiing fans. You'll find changing rooms, waxing room, a place to store your clothes and equipment so that your skiing experience is even more comfortable.

The high altitude and the lovely position of Santa Caterina Valfurva guarantee perfect snow conditions on all tracks throughout the winter season.

Accommodation

PROLOCO TURISMO VALFURVA

p.zza Magliavaca, 4
23030 S. Caterina Valfurva (SO)

tel. +39 0342935544

www.santacaterina.it – info.valfurva@bormio.eu

Con il patronato di:



Regione
Lombardia



Sci Club
Alta
Valtellina



2nd - 3rd December 2023

FIS CROSS COUNTRY

COPPA ITALIA
Trofeo Dante Canolini



Programme

Friday, 1st December 2023

Sprint Free official training

From 10.00 to 13.00 Official training

Til 15.00 Entry confirmation, Race Office

18.00 TCM at the race headquarter, 2nd floor

19.00 Bibs distribution, Race Office

Saturday, 2nd December 2023

Sprint Free technique 1,4 km

6:00 Wax room open

8:00 - 08:50 Sprint Course open

9:00-13.00 Prologue and heats

13.30 Prize giving ceremony

Til 15.00 Registration confirmation, Race Office

18.00 TCM at the race headquarter, 2nd floor

19.00 Bibs distribution, Race Office

Sunday, 3rd December 2023

Individual start Classic Technique 10 km

6:00 Wax room open

8:00 - 08:50 Course open

9:00 Start first athlete

12.30 Prize-giving ceremonies Individual competitions

Live Info



Con il patronato di:



2nd - 3rd December 2023

FIS CROSS COUNTRY

COPPA ITALIA
Trofeo Dante Canolini

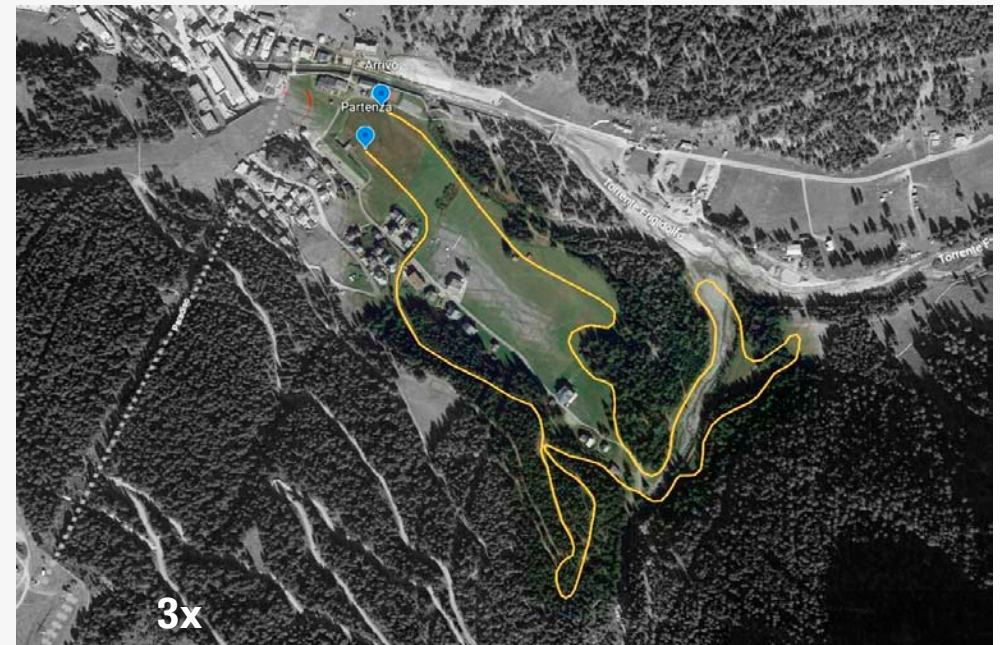


Race course

Sprint Free technique 1,4 km



Individual start Classic Technique 10 km



Con il patronato di:



2nd - 3rd December 2023

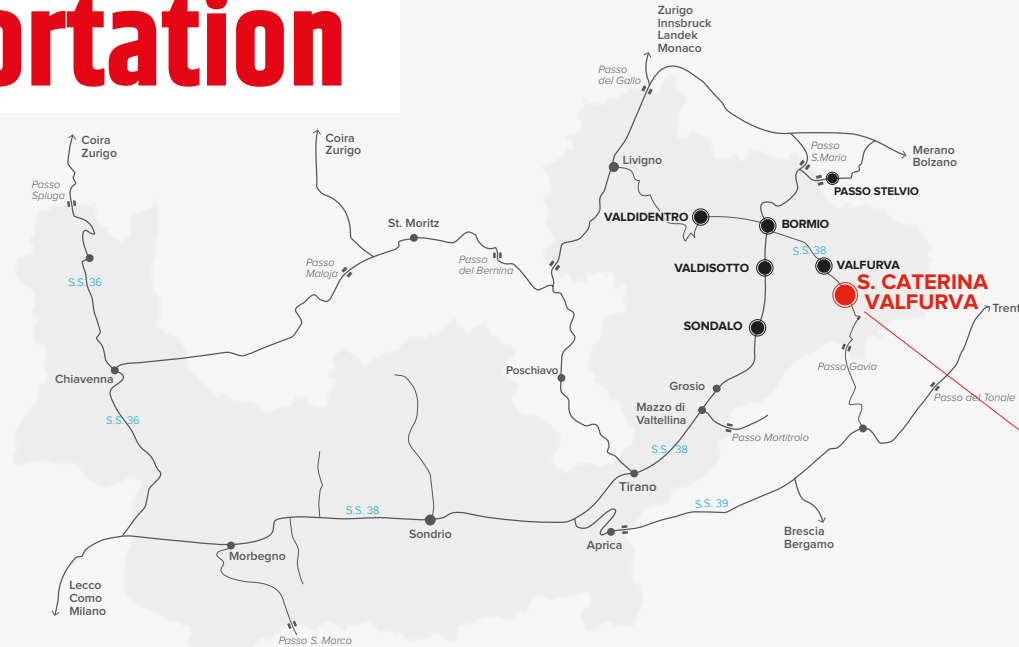
FIS CROSS COUNTRY

COPPA ITALIA
Trofeo Dante Canòlini



Transportation

How to reach us



BY CAR

S.S. 38

From south

Lecco, Colico, Sondrio, Tirano, Bormio, S. Caterina V.

S.S. 39

Aprica: Brescia, Edolo, Aprica, Tresenda, Bormio, S. Caterina V.

N. 27

Zernez (CH): St. Moritz, Zernez, Livigno, Bormio, S. Caterina V.

BY TRAIN

TRENORD

From

Milano (Staz. Centrale)

Line

Milano - Sondrio/Tirano

(2 / 2.30 h.)

www.trenord.it

www.trenitalia.it

FERROVIA RETICA

From

Coira - St. Moritz (CH)

Line

Coira - St. Moritz - Tirano

(2.30 / 4 h.)

www.rhb.ch

BY BUS

BUS PEREGO

Tirano, Bormio

www.busperego.com

BUS SILVESTRI

Alta Valtellina, Zernez

Annual

www.silvestribus.it

www.rail.ch

BUS SILVESTRI

Alta Valtellina, Pontresina

Summer

www.silvestribus.it

www.rail.ch

BY PLANE

MILANO ORIO AL SERIO

AIRPORT (IT) (170 Km)

MILANO LINATE

AIRPORT (IT) (200 Km)

MILANO MALPENSA

AIRPORT (IT) (220 Km)

ZÜRICH

AIRPORT (CH) (250 Km)

INNSBRUCK

AIRPORT (AUT) (215 Km)

MUNICH

AIRPORT (GER) (400 Km)

Con il patronato di:



2nd - 3rd December 2023

FIS CROSS COUNTRY

COPPA ITALIA
Trofeo Dante Canolini



Medical services



Ospedale Morelli Sondalo:
The next hospital is located
at the nearby town
Sondalo, 29 km drive /
6 min. by helicopter

te l. +39 0342 808111 or 118

1x

3x



Con il patronato di:



FIS CROSS COUNTRY

COPPA ITALIA

Trofeo Dante Ganolini

2nd - 3rd December 2023



S E E Y O U I N S . C A T E R I N A

CONTACT

raceoffice.scav@gmail.com